

AVer



PTC310

AI Auto Tracking PTZ Camera



YES, WE TRACK.

The PTC310 AI Auto Tracking PTZ Camera makes powerful and reliable Pro AV capability available to everyone. Drawing inspiration from the AVer Professional PTZ Camera family, the PTC310 features in-house AI functions like Presenter Mode and Zone Mode auto tracking, thanks to Human Detection processing. Embrace its 12X optical zoom lens and Full HD1080p resolution with hybrid auto tracking and smooth PTZ functions for broadcasting, streaming, or recording. Your exciting journey of audio and video capturing starts here!



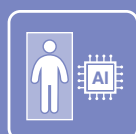
Full HD 1080p
Resolution



12X Optical
Zoom



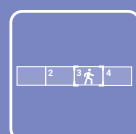
IP/HDMI/
USB/3G-SDI



Human
Detection AI



Presenter
Mode



Zone Mode



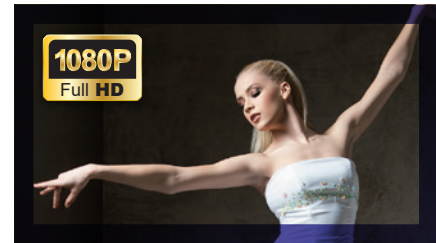
Intuitive
Web UI



Exclusive
Ceiling Mount

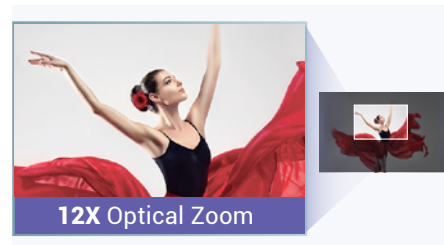
Full HD 1080p Output Resolution

Equipped with Full HD 1080p resolution, the PTC310 provides ultra-precise auto tracking. The PTC310 also features a Sony sensor that maintains a truly impressive video performance through every frame of your production.



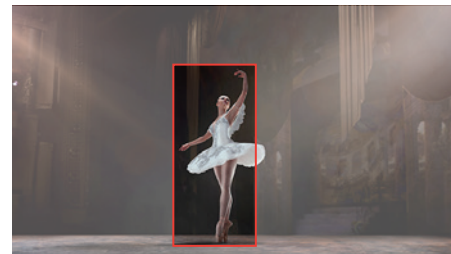
12X Optical Zoom & 2X Sensor Zoom

The zoom power of the PTC310 camera reaches an incredible 24X (12X optical and 2X sensor zoom). It works even while the camera is panning and tilting, allowing you to highlight content and rapidly change shooting angles. Operate a closer and clearer video feed with the unbeatable PTZ performance of the PTC310.



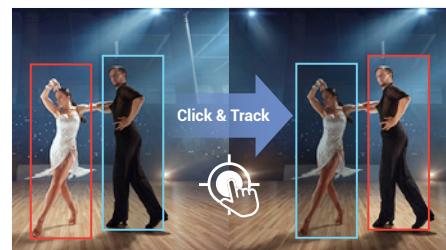
Human Detection AI

Welcome AVer's most advanced AI tool yet—Human Detection. This highly accurate processing function enables PTC310 to easily detect and capture human forms and moving objects in seconds. Never miss a tracking target again.



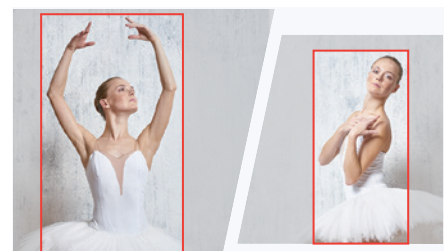
Click & Track

Redirect focus in an instant with the PTC310. Simply click on a target to quickly adjust the shooting angle and initiate precise tracking. This advanced feature is easy for anyone to operate via both remote control and intuitive Web UI.



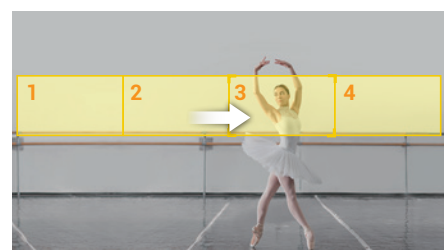
Presenter Mode

Track your target everywhere with Presenter Mode. This feature gives presenters the flexibility to leave the stage and interact with the audience, all while being continuously tracked. The camera stays locked on its target, even if other people or objects get in the way.



Zone Mode

Zone Mode enhances your ability to capture content on multiple displays. Create up to four content zones to steadily capture the content on display rather than the presenter's movements.

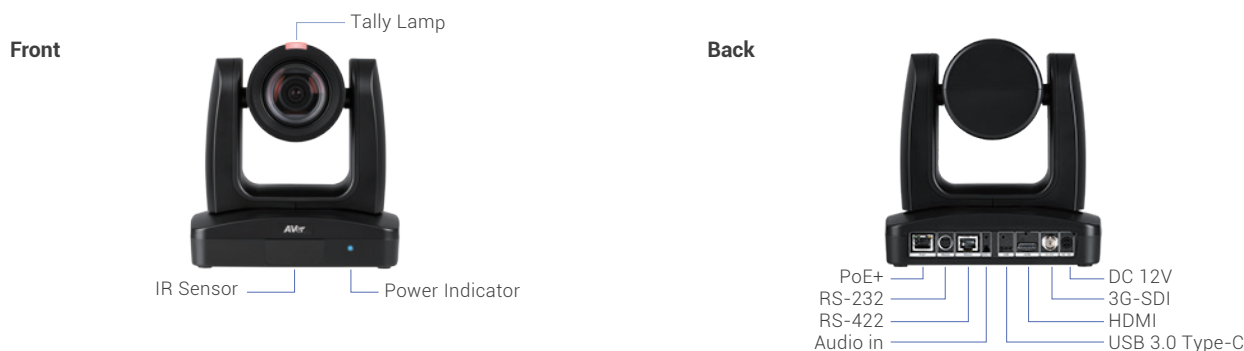


Product Specifications

Camera		AI Auto Tracking Functions	
Image Sensor	1/2.8" 1080p Exmor CMOS	Tracking Modes	Presenter Mode, Zone Mode
Effective Picture Elements	2 Megapixels	Interface	
Output Resolutions	1080p/60, 1080p/59.94, 1080p/50, 1080p/30, 1080p/29.97, 1080p/25, 1080i/60, 1080i/50, 720p/60, 720p/59.94, 720p/50	Video Outputs	3G-SDI, HDMI, IP, USB
		Audio Outputs	3G-SDI, HDMI, IP, USB
Minimum Illumination	0.4 lux (IRE50, F1.6, 30fps)	Audio Inputs	MIC in, Line in
S/N Ratio	≥ 50 dB	General	
Gain	Auto, Manual	Power Requirement	AC 100 - 240V to DC 12V/5A
TV Line	900 (Center)	Power Consumption	18W
Shutter Speed	1 / 1 to 1 / 32,000 sec	PoE	PoE+
Exposure Control	Auto, Manual, Priority AE (Shutter, IRIS), BLC, WDR	Dimensions (W x H x D)	180.0 x 183.5 x 145.0 mm
White Balance	Auto, Manual	Net Weight	1.7 (±0.1) kg
Optical Zoom	12X	Application	Indoor
Digital Zoom	12X	Tally Lamp	Yes
Sensor Zoom	2X	Security	Kensington Slot
Viewing Angles	DFOV : 78° (Wide) to 7° (Tele) HFOV : 70° (Wide) to 6° (Tele) VFOV : 42° (Wide) to 3° (Tele)	Remote Control	Infrared
		Operating Conditions	Temperature : 0 °C to +40 °C Humidity : 20% to 80%
		Storage Conditions	Temperature : -20 °C to +60 °C Humidity : 20% to 95%
Focal Length	f = 3.9 mm (Wide) to 46.8 mm (Tele)	IP Streaming	
Aperture (Iris)	F = 1.6 (Wide) to 2.8 (Tele)	Resolution	1080p 60fps
Minimum Working Distance	0.3 m (Wide), 1.5 m (Tele)	Network Video Compress Formats	H.264, H.265, MJPEG
Pan/Tilt Angles	Pan : ±170°, Tilt : +90° / -30°	Maximum Frame Rate	1080p 60fps
Pan/Tilt Speed (Manual)	Pan : 0.1° to 100° / sec, Tilt : 0.1° to 100° / sec	Bit-Rate Control Modes	VBR, CBR (selectable)
Preset Speed	Pan : 200° / sec, Tilt : 200° / sec	Range of Bit-Rate Setting	512 Kbps to 32 Mbps
Preset Positions	10 (IR), 256 (RS-232 / RS-422 / IP)	Network Interfaces	10 / 100 / 1000 Base-T
Camera Control - Interfaces	RS-232 (DIN8), RS-422 (RJ45), IP	Multi-Stream Capability	2 (RTSP / Web Page), 1080p 60fps (max.)
Camera Control - Protocols	VISCA (RS-232 / RS-422 / IP), PELCO-D & PELCO-P (RS-232 / RS-422), CGI (IP)	Network Protocols	IPv6, IPv4, TCP, UDP, ARP, ICMP, IGMP, HTTP, DHCP, RTP / RTCP, RTSP, RTMP, VISCA over IP
Image Processing	Noise Reduction (2D / 3D), Flip, Mirror	NDI® HX Capability	Yes (optional)
Power Frequencies	50 Hz, 60 Hz	USB	
Audio		Connector	USB 3.0
Channel	2ch Stereo	Video Format	MJPEG
Codecs	AAC-LC (48 / 44.1 / 32 / 24K), G.711, PCM (8K)	Maximum Video Resolution	1080p
Sample Rates	48 / 44.1 / 32 / 24 / 16 / 8 KHz	USB Video Class (UVC)	UVC 1.1
Web UI		USB Audio Class (UAC)	UAC 1.0
Live Video Preview	Yes	Software Tools	
Camera PTZ Control	Pan, Tilt, Zoom, Focus, Preset Control	IP Search and Configuration Tools	Support Windows® 7 or later
Camera/Image Adjustment	Exposure, White Balance, Picture		
Network Configuration	DHCP, IP Address, Gateway, Subnet Mask, DNS		
Warranty			
Camera	3 Years		
Accessories	1 Year		
Package Contents			
Camera, Remote Control, RS-232 In/Out Cable, Din 8 To D-Sub 9 Cable, Power Adapter, Power Cord, Cable Ties (x 5), Screws (x 10), Cable Fixing Plates (x 2), Ceiling Mount Brackets (x 2), Quick Start Guide			
Optional Accessories			
AVer CL01 PTZ Camera Controller, L-Type Wall Mount			

* Specifications may vary depending on location and are subject to change without notice.

Product Appearance



©2020 AVer Information Inc. All rights reserved.
All brand names and logos are trademarks of their respective companies.

Distributor/Dealer